

29er World Championships

29th July to 6th August 2022

The Organising Authority is the Club Nàutic El Balís in conjunction with the International 29er Class Association

SAILING INSTRUCTIONS

[NP] denotes a rule that shall not be grounds for protests by a boat. This changes RRS 60.1(a).

[DP] denotes a rule for which the penalty is at the discretion of the International Jury.

[SP] denotes a rule for which a standard penalty may be applied by the race committee without a hearing or a discretionary penalty applied by the International Jury with a hearing

1. RULES

- 1.1. The regatta will be governed by the rules as defined in The Racing Rules of Sailing.
- 1.2. Penalties: In RRS 44.1 "Two-Turns Penalty" is changed to "One-Turn Penalty"
- 1.3. Appendix P, Special Procedures for Rule 42, shall apply, with RRS P2.1 to P2.4 deleted and replaced by: "When a boat is penalised under rule P1.2, her penalty shall be a One-Turn Penalty under rule 44.2. If she fails to take it she shall be disqualified without a hearing."
- 1.4. The Class Rules will apply except for any that are altered by the Notice of Race. The Class Race Management Guidelines will also apply, but a failure to follow these Guidelines is not on its own grounds for redress. This changes RRS 62.1(a).
<https://29er.org/assets/29erMedia/pdf/29er%20RACE%20MANAGEMENT%20GUIDELINES%202022.pdf>
- 1.5. No National prescriptions will apply.
- 1.6. The COVID-19 protocols and other measures implemented will be communicated once decided by the government authority.
- 1.7. If there is a conflict between languages the English text will take precedence.

2. ADDITIONAL IDENTIFICATION [NP][SP]

While racing each boat shall display a coloured placard corresponding to the fleet to which she has been assigned and inserted in the sail pocket near the clew of the mainsail. Placards will be available from the race office.

3. NOTICES TO COMPETITORS

Notices to competitors will be posted on the official notice board; <https://29erworlds.org/official-notice-board/>

4. CHANGES TO SAILING INSTRUCTIONS

Any change to the sailing instructions will be posted not less than 30 minutes before flag D is displayed (SI 5.2), except that any change to the schedule of races will be posted by 20:00 hours on the day before

it will take effect. Up to FOUR races a day may be sailed for each fleet without the need for a change in Sailing Instructions.

5. SIGNALS MADE ASHORE

- 5.1. Signals made ashore will be displayed on the flag poles located near the ramps.
- 5.2. [NP][SP] Flag D with one sound means: "The warning signal will be made not less than 30 minutes for Course Bravo and 45 minutes for Courses Alpha and Charlie after flag D is displayed". Boats shall not launch until their fleet signal has been made.

6. FORMAT OF RACING

- 6.1. The regatta will consist of a Qualifying Series and a Final Series. The provisional racing schedule is described in Attachment C. Two fleets will race on each racecourse with the second fleet starting not less than five minutes after the first fleet
- 6.2. Qualifying Series:
 - (a) For the Qualifying Series boats will be assigned to fleets Yellow, Blue, Red, Green, Purple and White of as nearly as possible, equal size and ability. Initial fleet assignments will be made by a seeding committee appointed by the Class and posted by 09:00 on the first day of racing.
 - (b) In the Qualifying Series boats will be reassigned to fleets after each day of racing. However the first reassignment will not be made until all fleets have completed two races. If all fleets have completed the same number of races, boats will be reassigned based on their ranks in the series. If all fleets have not completed the same number of races the series scores for reassignment will be calculated for those races, numbered in order of completion, completed by all fleets. Reassignments will be made as follows;

<u>Rank in series</u>	<u>Fleet assignment</u>
First	Yellow
Second	Blue
Third	Red
Fourth	Green
Fifth	Purple
Sixth	White
Seventh	White
Eighth	Purple
Ninth	Green
Tenth	Red
Eleventh	Blue
Twelfth	Yellow

and so on

- 6.3. Final Series:

- (a) Boats will be assigned to the Final Series fleets Gold, Silver, Bronze, Emerald, Fuchsia and Pearl based on their ranks in the Qualifying Series. The 40 boats ranked highest in the Qualifying Series will be assigned to the Gold fleet. The remaining boats in the Qualifying Series will be assigned to the Silver, Bronze, Emerald, Fuchsia and Pearl fleets as nearly as possible of equal size.

- (b) Any recalculation of Qualifying Series rankings after boats have been assigned to the Final Series fleets will not affect the assignments except that a redress decision may promote a boat to a higher fleet.
- (c) [SP] For the Final Series the top three male competitors and the top three female competitors in the Gold fleet shall wear leader bibs as directed by the organisers. These bibs will be supplied by the organisers.

7. SCHEDULE

7.1. The Championship schedule will be as follows:

Date	Event	Time
Friday, 29th July	Race Office opens Registration & Inspection	0830 hrs. 0830-1800 hrs.
Saturday, 30th July	Registration & Inspection	0830-1800 hrs.
Day 0 - Sunday, 31st July	Registration & Inspection Practice Race Competitor briefing Opening Ceremony	0830-1700 hrs. 1300 hrs. start 1730 hrs. 1900 hrs.
Day 1 - Monday, 1st August	Qualifying series	1100 hrs. start
Day 2 - Tuesday, 2nd August	Qualifying series	1100 hrs.
Day 3 - Wednesday, 3rd August	Qualifying series Regatta Dinner	1100 hrs. 2000 hrs. (all welcome)
Day 4 - Thursday, 4th August	Final series	1100 hrs.
Day 5 - Friday, 5th August	Final series	1100 hrs.
Day 6 - Saturday, 6th August	First Warning Signal - Final series Prize Giving & Closing Ceremony	1100 hrs. 1800 hrs.

- 7.2. On Saturday 6th August there will be no warning signal after 15:00.
- 7.3. Race Office opening hours: 9:00 till 18:00 every day (or later if there are hearings).
- 7.4. Each race day, a daily briefing will be held at the village, 1.5 hours before the first scheduled warning signal.

8. CLASS FLAGS

Class flags will be the class insignia on a coloured flag are as follows:

Qualifying fleets	Final fleets	Flag colour
Yellow	Gold	Yellow
Blue	Silver	Blue
Red	Bronze	Red
Green	Emerald	Green
Purple	Fuchsia	Purple
White	Pearl	White

9. RACING AREA

Attachment A shows the location of racing areas, courses ALPHA, BRAVO and CHARLIE.

10. THE COURSE

- 10.1. The diagram in Attachment B shows the course, including the course signals, the order in which marks are to be passed, and the side on which each mark is to be left.
- 10.2. No later than the warning signal the course signals and the approximate compass bearing of the first leg will be displayed on a board on the start line committee boat.
- 10.3. A gate may be replaced by a single mark to be left to port
- 10.4. Races will not be shortened. This changes RRS 32.

11. MARKS

11.1. Course A

Marks 1, 2S and 2P	Orange
Change mark	Orange with a black band

Course B

Marks 1, 2S and 2P	Yellow
Change mark	Yellow with a black band

Course C

Marks 1, 2S and 2P	Red
Change mark	Red with a black band

- 11.2. Starting marks will be race committee vessels.
- 11.3. Finishing marks will be a race committee vessel and a Green inflatable mark.

12. THE START

- 12.1. The starting line will be between staffs displaying orange flags on the race committee vessels or marks.
- 12.2. [DP][NP] Boats whose warning signal has not been made shall avoid the starting area during the starting sequence for other races.
- 12.3. A boat starting later than 4 minutes after her starting signal will be scored Did Not Start without a hearing. This changes RRS A4 and A5.1.
- 12.4. To alert boats that a race or sequence of races will begin soon, the orange starting line flag will be displayed with ONE sound signal not less than TWO minutes before the warning signal is displayed.

13. CHANGE OF THE NEXT LEG OF THE COURSE

To change the next leg of the course, the race committee will lay a new mark and remove the original mark as soon as practicable. When in a subsequent change a new mark is replaced, it will be replaced by an original mark.

14. THE FINISH

The finishing line will be between the staff displaying a blue flag on the race committee vessel and the nearby finishing mark.

15. TIME LIMITS AND TARGET TIMES

- 15.1. Time limits and target times are as follows:

Time limit	Target time
45 minutes	30 minutes

- 15.2. If no boat sails the course and finishes within the time limit the race will be abandoned. Failure to meet the target time will not be grounds for redress. This changes RRS 62.1(a).
- 15.3. Boats failing to finish within 15 minutes after the first boat sails the course and finishes will be scored Did Not Finish without a hearing. This changes RRS A4 and A5.1.

16. PROTESTS AND REQUESTS FOR REDRESS

- 16.1. Protests and requests for redress or reopening shall be made within the appropriate time limit using the "Raise Protest" link on the Official Notice Board at <https://29erworlds.org/official-notice-board/>
- 16.2. The protest time limit for each course area is 60 minutes after the last boat has finished the last race of the day on that day, or the race committee signals no more racing today, whichever is later.
- 16.3. Notices will be posted no later than 30 minutes after the protest time limit to inform competitors of arbitration meetings and hearings in which they are parties or named as witnesses. These meetings and hearings will be held in the protest room, next to the Race Office.
- 16.4. A list of boats that under SI 1.3, have been penalized for breaking RRS 42 will be posted.
- 16.5. Decisions of the jury will be final as provided in RRS 70.5.

17. ARBITRATION

Appendix T shall apply

18. SCORING

- 18.1. THREE Qualifying Series races are required to be completed by all fleets to constitute a regatta
- Qualifying Series**
- 18.2. FIVE races are required to be completed by each fleet to constitute a Qualifying Series. If these FIVE races are not completed by the end of Day 3, all races on Day 4 will be Qualifying Series races.
- 18.3. If at the end of Day 4 FIVE Qualifying Series races have not been completed by all fleets the Qualifying Series will continue and the regatta will be scored as a Single Series. NO Final Series races will be held.
- 18.4. If at the end of the Qualifying Series some boats have more race scores than others, scores for those boats' most recent races will be excluded so that all boats have the same number of race scores.
- 18.5. For the Qualifying Series, RRS A5.1 is changed so that the scores are based on the number of boats assigned to the largest fleet.

Final Series

- 18.6. Each Final Series fleet will be scored separately. Final Series fleets need not have completed the same number of races. The boats in the Gold fleet will be ranked highest, followed by boats in Silver then Bronze, then Emerald, then Fuchsia, then Pearl.
- 18.7. A boat's regatta score will be the total of her Qualifying Series score, plus her Final Series score.
- Series Scores** (applies separately to Qualifying and Final Series):
- 18.8. When fewer than FIVE races have been completed, a boat's series score will be the total of her race scores.
- 18.9. When between 5 and to 9 races have been completed, a boat's series score will be the total of her race scores excluding her worst score.

- 18.10. In a Single Series when more than 9 races have been completed, a boat's series score will be the total of her race scores excluding her TWO worst scores.

Scoring Queries

- 18.11. To request correction of an alleged error in posted race or series results, a boat shall complete a scoring enquiry form available at the race office.

Resolving Ties

- 18.12. In the Qualifying Series ties will be broken in accordance with RRS A8.
In the Final Series ties will be broken in accordance with RRS A8 using boats' Final Series race scores

19. SAFETY REGULATIONS [DP][NP][SP]

- 19.1. RRS 40.1 applies at all times whilst afloat.

19.2. Check-out and check back in: [SP]

Each competitor will be provided at registration with a personal wrist band which should be worn at all times during the event, even when not racing as this is an accreditation for the marina.

Each competitor shall, before going afloat each day, check out, and check back in immediately after returning to shore on the portable wristband readers next to the launching ramps. However, a competitor who fails to check back in on the ramp may instead check back in at the portable reader next to the race office before the protest time limit.

- 19.3. A boat that retires from a race shall notify the race committee as soon as possible.

- 19.4. Under all circumstances coaches and other support boats are expected to assist any boat in distress.

20. REPLACEMENT OF CREW AND EQUIPMENT

- 20.1. Substitution of competitors will not be allowed without prior written approval of the race committee.

- 20.2. Substitution of damaged or lost equipment will not be allowed unless approved by the technical committee. Requests for substitution shall be made to the committee at the first reasonable opportunity.

21. EQUIPMENT & MEASUREMENT CHECKS [DP]

- 21.1. [NP] On the water, a boat shall comply with any instruction from the race committee, equipment inspector or measurer to proceed immediately to a designated area for inspection.

- 21.2. Only one set of sails and one forestay shall be used during the regatta. They shall be presented and stamped/tagged during the measurement procedure.

22. OFFICIAL BOATS

Official boats will be identified as follows:

Race committee vessels - Course A

Race committee vessels - Course B

Race committee vessels - Course C

Jury boats

Press boats

Technical Committee / measurement boats

White flags with letter A

White flags with letter B

White flags with letter C

White flags with IJ

White flags with P

White flags with IM

23. SUPPORT VESSELS [DP][NP]

- 23.1. Support vessels shall be registered with the Organising Authority and shall comply with local legislation and the 29er Class Support Vessel Regulations (see International Class website under Events and Race Management)
- 23.2. Team leaders, coaches and other support personnel shall stay outside areas where boats are racing from the time of the preparatory signal until all boats have finished or retired or the race committee signals a postponement, general recall or abandonment.
- 23.3. Support vessels shall be marked with their national letters on outboard covers or a flag. Minimum height for letters is 200mm.
- 23.4. If called upon support vessels shall be required to act as rescue boats.

24. CODE OF CONDUCT [DP][NP]

Competitors and Support persons shall comply with any reasonable request from a regatta official or a member of the Organising Authority. Boats shall follow all instructions given by the OA when returning to shore to avoid overcrowding at the launching ramps.

25. TRASH DISPOSAL

Trash may be placed aboard support and race committee boats.

26. BERTHING [DP][NP]

Boats shall be kept in their assigned places in the boat park.

27. RADIO COMMUNICATION [DP][NP]

Except in an emergency, a boat shall neither make radio transmissions while racing nor receive radio communications not available to all boats. This restriction includes mobile telephones.

28. ELECTRONIC EQUIPMENT [DP][NP][SP]

- 28.1. Boats shall carry tracking devices supplied by the Organising Authority when so requested. Carrying a tracking device will not be grounds for a protest by another competitor.
- 28.2. A boat or support team shall not use a drone over the racing area. However, a drone may be flown by a licensed company authorised by the Organising Authority to record video and still imagery exclusively for advertising and promotion.

29. PRIZES

- 29.1. Prizes for the 29er World Championships will be awarded in the following categories,
 - a. Men's World Champions 1st to 3rd.
 - b. Women's World Champions 1st to 3rd.
 - c. Overall 1st to 10th.
 - d. Under 17 World Champions 1st to 3rd male and 1st to 3rd female (must be born in 2005 or later).
 - e. Silver, Bronze, Emerald, Fuchsia and Pearl Fleets 1st to 3rd.
 - f. The Ovington Nations Cup shall be awarded to the top nation based on the scoring in Attachment D.
- 29.2. Top 25 Sail Numbers: the top 25 teams shall be awarded the corresponding sail number and recognized at the prize giving ceremony. Sail numbers shall be provided by Ovington Boats. Other prizes may be awarded at the discretion of the Organising Authority.

30. RIGHTS TO USE NAMES AND LIKENESSES

Where consent has been given for imagery, competitors grant to the Organising Authority without payment the right in perpetuity to make, use and show any motion pictures, still pictures and live, taped or filmed television of or relating to the event.

31. RISK STATEMENT

RRS 3 of the Racing Rules of Sailing states: "The responsibility for a boat's decision to participate in a race or to continue racing is hers alone."

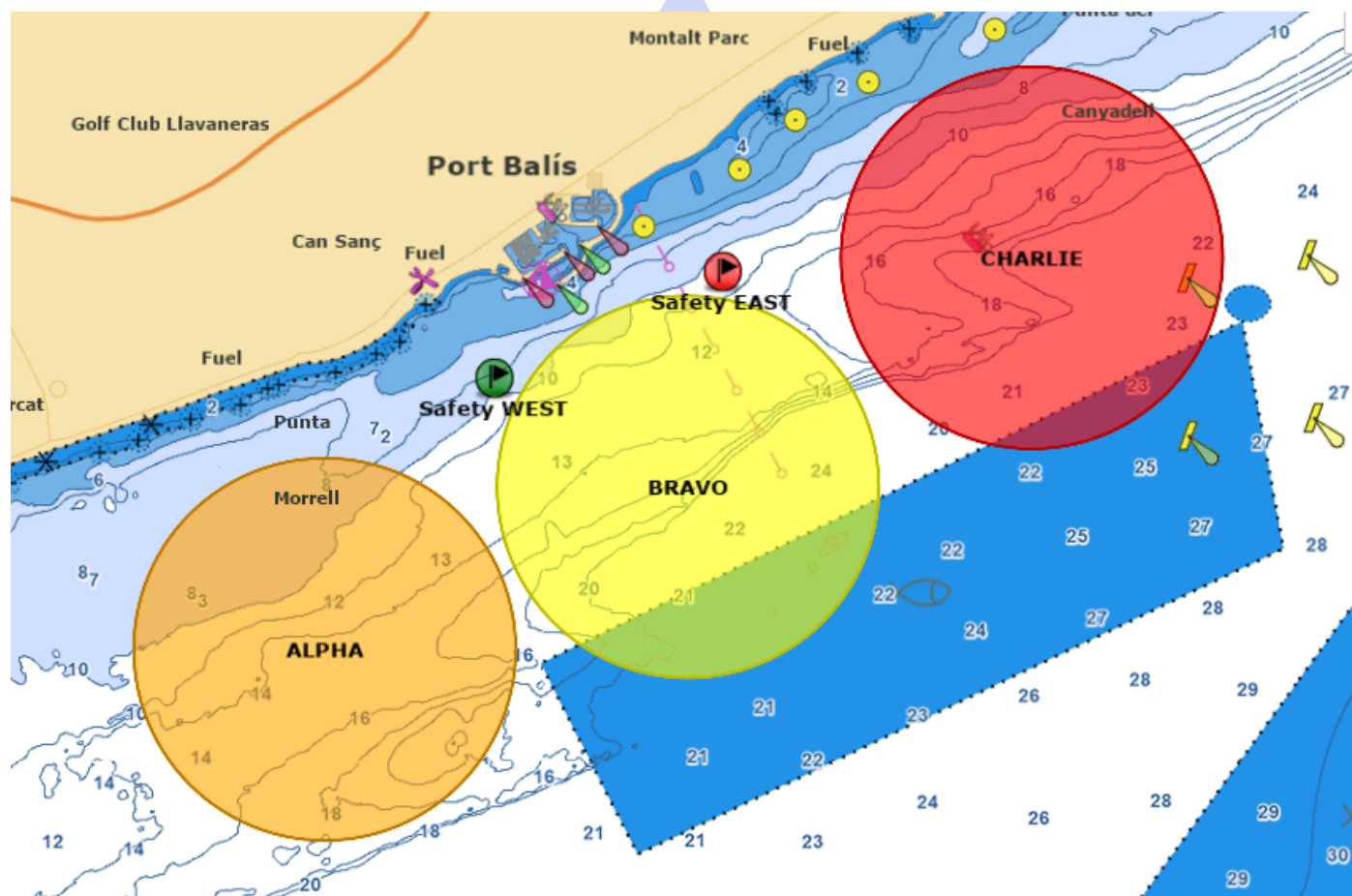
Sailing is by its nature an unpredictable sport and therefore inherently involves an element of risk. By taking part in the event, each competitor agrees and acknowledges that:

- a) They are aware of the inherent element of risk involved in the sport and accept responsibility for the exposure of themselves, their crew and their boat to such inherent risk whilst taking part in the event;
- b) They are responsible for the safety of themselves, their crew, their boat and their property whether afloat or ashore;
- c) They accept responsibility for any injury, damage or loss to the extent caused by their own actions or omissions;
- d) Their boat is in good order, equipped to sail in the event and they are fit to participate;
- e) The provision of a race management team, patrol boats and other officials and volunteers by the event organiser does not relieve them of their own responsibilities;
- f) The provision of patrol boat cover is limited to such assistance, particularly in extreme weather conditions, as can be practically provided in the circumstances
- g) It is their responsibility to familiarise themselves with any risks specific to this venue or this event drawn to their attention in any rules and information produced for the event and to attend any competitor briefing held for this event.

32. INSURANCE

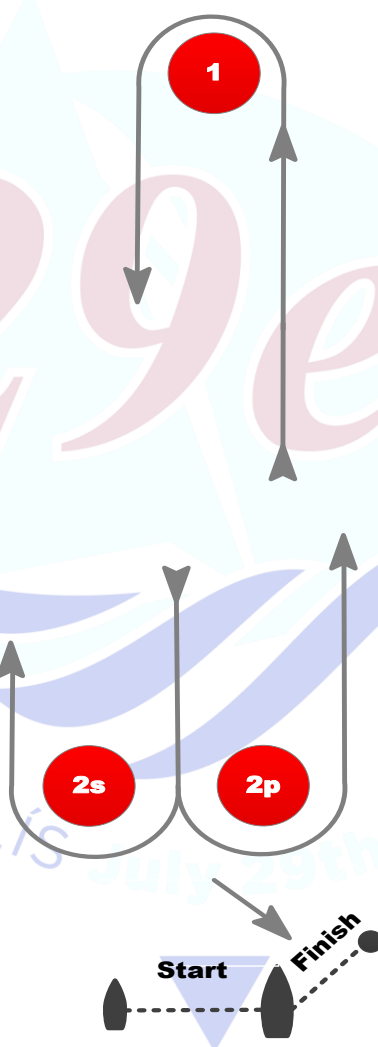
Each participating boat shall be insured with valid third-part insurance with a minimum cover of Euros 1.5 million per event or the equivalent.

Attachment A - Racing Areas



Attachment B – The course

L	COURSE: WINDWARD / LEEWARD with reaching finish
Signal	Mark Rounding Order
L2	Start – 1 – 2s/2p – 1 – 2p – Finish
L3	Start – 1 – 2s/2p – 1 – 2s/2p – 1 – 2p – Finish



Attachment C - Provisional Racing Schedule

World Championships 31st July to 6th August 2022			
Warning signal			
Day 0 - 31 July Practice Day	Course A	Course B	Course C
12:55	29er Yellow	29er Red	29er Purple
ASAP	29er Blue	29er Green	29er White
Day 1 - 1 August Qualifying	Course A	Course B	Course B
10.55 / 11.25 / 11.10	29er Yellow 3 races	29er Red 3 races	29er Purple 3 races
ASAP	29er Blue 3 races	29er Green 3 races	29er White 3 races
Day 2 - 2 August Qualifying	Course A	Course B	Course C
10.55 / 11.25 / 11.10	29er White 3 races	29er Blue 3 races	29er Green 3 races
ASAP	29er Purple 3 races	29er Yellow 3 races	29er Red 3 races
Day 3 - 3 August Qualifying	Course A	Course B	Course C
10.55 / 11.25 / 11.10	29er Green 3 races	29er Purple 3 races	29er Yellow 3 races
ASAP	29er Red 3 races	29er White 3 races	29er Blue 3 races
Day 4 - 4 August Final	Course A	Course B	Course C
10.55 / 11.25 / 11.10	29er Gold 3 races	29er Silver 3 races	29er Bronze 3 races
ASAP	29er Emerald 3 races	29er Fuchsia 3 races	29er Pearl 3 races
Day 5 - 5 August Final	Course A	Course B	Course C
10.55 / 11.25 / 11.10	29er Bronze 3 races	29er Gold 3 races	29er Silver 3 races
ASAP	29er Pearl 3 races	29er Emerald 3 races	29er Fuchsia 3 races
Day 6 - 6 August Final	Course A	Course B	Course C
10.55 / 11.25 / 11.10	29er Gold 2 races	29er Silver 2 races	29er Bronze 2 races
ASAP	29er Emerald 2 races	29er Fuchsia 2 races	29er Pearl 2 races

Attachment D

2022 29er WORLD CHAMPIONSHIP OVINGTON NATIONS CUP

The Ovington Nations Cup shall be awarded to the nation with the best THREE- boat aggregate points score at the 2022 29er World Championship, calculated as follows:

1. A nation's THREE boats shall be the nation's highest placed all-female boat, the nation's highest placed all-male boat, and the nation's highest placed boat excluding these two. If a Final Series is sailed, the three boats shall have sailed in the Gold or Silver fleets.
2. At the conclusion of the Championships, each nation's three boats' points scores will be added together. The nation with the lowest total score shall win the Nations Cup, and other nations shall be ranked accordingly.
3. However, to enable boats from the Silver Fleet to take part and be appropriately scored, the points score of any boat from the Silver Fleet shall be increased by N where $N = (\text{Points Scored by Last Boat in Gold Fleet}) - (\text{Points Scored by First Boat in Silver}) + 1$.

This allocates a Nations Cup score to all boats in Silver Fleet based on scoring the first boat in Silver one point more than the last boat in Gold.

4. Ties shall be broken in favour of the nation whose three boats secured more first place finishes in the Gold Fleet Final Series (or Single Series if no Final Series is sailed). If this fails to break a tie, it shall be broken in favour of the three boats with more second place finishes in those races, then third place finishes, and so on until the tie is broken.

Attachment E

29er SUPPORT VESSEL REGULATIONS

➤ Support Vessels shall carry the following Equipment on board:

- Life jackets / buoyance aids for the driver and all passengers
- Engine kill cord (also known as a safety lanyard or automatic engine immobiliser) with a spare kill cord on the support boat
- VHF radio capable of receiving instruction from Safety or Race Committee
- First-aid kit
- Device for making a sound signal
- Compass
- Adequate anchor and tackle for conditions and depth
- Tow rope (minimum 15m long and 10mm thick)
- Knife

➤ Support Vessel Regulations

- Support Vessels shall be registered with the Organising Authority and shall be marked with their applicable national sail letters clearly displayed, the minimum height for these letters is 200mm.
- Support Vessels shall comply with all local regulations
- Support Vessel shall follow Race Committee instructions on the designated VHF channel
- **Kill cords shall be worn at all times when the engine is running**
- Life jackets / buoyance aids - it is recommended that they are worn at all times when afloat and **shall** be worn in winds of over 10 knots or when motoring at more than 10 knots
- Support vessels shall not be positioned, except during rescue operations
 - ✓ Closer than 100 metres of any boat racing
 - ✓ Within 100 metres to leeward of the starting line and its extensions from the warning signal until all boats have left the starting area or the race committee signals a postponement, general recall or abandonment
 - ✓ Within 100 metres of any mark of the course while boats are in the vicinity of that mark
 - ✓ Within 100 metres of the finishing line while boats are finishing
 - ✓ In addition, support vessels that are motoring above 5 knots shall remain at least 150 metres from any boat racing

David Campbell-James
Email: campbelljames@btinternet.com
January 2022