

29er World Championships

El Balis, Spain

29th July to 6th August 2022

The Organising Authority is the Club Nàutic El Balís in conjunction with the International 29er Class Association

NOTICE OF RACE

- [NP] denotes a rule that shall not be grounds for protests by a boat. This changes RRS 60.1(a).
[DP] denotes a rule for which the penalty is at the discretion of the International Jury.
[SP] denotes a rule for which a standard penalty may be applied by the race committee without a hearing or a discretionary penalty applied by the International Jury with a hearing.

1. RULES

- 1.1. The regatta will be governed by the rules as defined in *The Racing Rules of Sailing*.
- 1.2. Penalties: In RRS 44.1 "Two-Turns Penalty" is changed to "One-Turn Penalty".
- 1.3. Appendix P, Special Procedures for Rule 42, shall apply, with RRS P2.1 to P2.4 deleted and replaced by: "When a boat is penalised under rule P1.2, her penalty shall be a One-Turn Penalty under rule 44.2. If she fails to take the penalty she shall be disqualified without a hearing."
- 1.4. The Class Rules will apply except for any that are altered by the Notice of Race. The Class Race Management Guidelines will also apply, but a failure to follow these Guidelines is not on its own grounds for redress. This changes RRS 62.1(a).
https://www.29er.org/assets/29erMedia/pdf/29er_Race_Management_Guidelines-201904.pdf
- 1.5. No National prescriptions will apply.
- 1.6. If there is a conflict between languages the English text will take precedence.
- 1.7. [DP] The COVID-19 protocols implemented by the Organising Authority and the Spanish & local County Governments will be strictly adhered to, the penalties for infringing these protocols will be decided by the International Jury and could be disqualification.

2. [NP][DP] ADVERTISING

Boats may be required to display advertising chosen and supplied by the Organising Authority and the International 29er Class Association. Boats shall affix the stickers in accordance with instructions given by the Organising Authority.

3. ELIGIBILITY AND ENTRY

- 3.1. All competitors shall be fully paid-up members of the International 29er Class Association.
- 3.2. Eligible boats may enter through the event website www.29erworlds.org via OurClubAdmin.
- 3.3. Competitors must be 13 years old before 31st December 2022. Entries from sailors under this age will NOT be accepted by the Organising Authority.
- 3.4. **Parent/Guardian Declarations:** All helms and crews under 18 years of age during the event shall complete an online Parent/Guardian declaration as part of the online entry form. Entry forms will be emailed to the person who enters the team for their records.

Sailors may access their entry forms in their OurClubAdmin account as part of the paperless entry process and update any relevant information before the event. These forms will not be required to be printed and presented at registration. Sailors will be required to check the forms online with registration personnel as part of the registration process to confirm all their details are correct.

During registration competitors may disclose any medical data they feel is relevant to the organisers. This information will be held confidentially and destroyed after the event unless there is a legal reason for its retention.

- 3.5 Russian sailors will not be permitted to enter the Championship.
- 3.6 Competitors of Spanish nationality or legal residents in Spain or sailing in boats representing a Spanish club must be in possession of the Spanish Sailing Federation License for 2022.

4. FEES

- 4.1. Entry fees: **Early Entry 500.-€** (until 4th June 2022)
Standard Entry 550.-€ (until 16th July 2022)
Late Entry 675.-€
- 4.2. Entries will only be accepted after **16th July 2022** at the discretion of the Class Executive and the Local Organising Authority and with the payment of the Late Entry Fee.
- 4.3. **Coach** Event Registration Fee: **100.-€** per person. All registered coaches will have the same rights and access as the participants (including meals and event facilities). This fee includes rib berthing and crane.
Companion/Parent boats Registration Fee: **60.-€** per boat, includes only rib berthing and crane service.
All Support personnel entries (coaches, companions and parents) must be made by 16th July.
- 4.4. Refund of Entry Fees: if a team withdraws from the European Championship, the entry fee will be refunded as follows;
 - Up to 4th June: 75% of the entry fee will be refunded.
 - Up to 16th June: 50% of the entry fee will be refunded.
 - After 16th July: Refunds shall **not** be granted.
- 4.5. Cancellation; if the World Championship is cancelled each competitor or coach shall receive a refund of **75%** of the entry fees he or she paid.

5. FORMAT OF RACING

The regatta will consist of a Qualifying series and a Final series.

6. SCHEDULE

- 6.1. The Championship schedule will be as follows,

Date	Event	Time	Location/remarks
Friday, 29th July	Race Office	0900-1800 hrs.	Race Office
	Registration & Inspection	0900-1800 hrs.	Measurement Area
Saturday, 30th July	Race Office	0830-1800 hrs.	Race Office
	Registration & Inspection	0830-1800 hrs.	Measurement Area
Sunday, 31st July	Race Office	0830-1700 hrs.	Race Office
	Registration & Inspection	0830-1700 hrs.	Measurement Area
	Practice Race	1300 hrs.	1 Race scheduled
	Competitor briefing	1730 hrs.	Village
	Opening Ceremony	1900 hrs.	Town Hall square
Monday, 1st August	First Warning Signal - Qualifying series	1100 hrs.	3 Races scheduled
Tuesday, 2nd August	First Warning Signal - Qualifying series	1100 hrs.	3 Races scheduled
Wednesday, 3rd August	First Warning Signal - Qualifying series	1100 hrs.	3 Races scheduled
	Regatta Dinner (all sailors & coaches invited)	2000 hrs.	Club house - beach area
Thursday, 4th August	First Warning Signal - Final series	1100 hrs.	3 Races scheduled
Friday, 5th August	First Warning Signal - Final series	1100 hrs.	3 Races scheduled
Saturday, 6th August	First Warning Signal - Final series	1100 hrs.	3 Races scheduled
	Prize Giving & Closing Ceremony	1800 hrs.	Club house - beach area

- 6.2. On Saturday 6th August there will be no warning signal after 1500 hrs.
- 6.3. Race Office opening hours during racing days: 0900 till 1800 hrs every day (or later if there are hearings).
- 6.4. Each race day, a daily briefing will be held at the village, 1.5 hours before the first scheduled warning signal.

7. MEASUREMENT

- 7.1. Measurement - all competitors will be required to complete an equipment registration form prior to sailing.
- 7.2. All equipment will be required to pass the "Inspection" prior to the first day of racing, according to the schedule (see NoR 6.1). Time table for inspections will be published in due course.
- 7.3. Only one set of sails, and one forestay, shall be used throughout the regatta.
- 7.4. Equipment shall only be replaced with the permission of the Technical Committee.
- 7.5. Random equipment inspection will take place on and off the water without notice.
- 7.6. Non-Class legal equipment is not permitted in the venue from the first day of Inspection.

8. SAILING INSTRUCTIONS

The Sailing Instructions will be available online at www.29erworlds.org at the latest five days before the event. No paper copies will be handed out.

9. VENUE

- 9.1. The 2022 29er World Championships will be held at:
Club Nàutic El Balís
Carretera Nacional II, Km 651.5
08392 Sant Andreu de Llavaneres (Barcelona)
Spain.
- 9.2. Racing will take place in the coastal waters in front of Port Balís.
- 9.3. **Attachment A** shows the approximate location of the racing areas.

10. COURSES

Courses will be windward-leeward with a gate at the leeward end of the course. The race target time will be 30 minutes.

11. SCORING

- 11.1. The Low Points Scoring System of RRS Appendix A will apply.
- 11.2. Three Qualifying races are required to be completed by all fleets to constitute a regatta.
- 11.3. Five Qualifying races are required to be completed by each fleet to constitute a Qualifying Series. If five races are not completed as scheduled, for all fleets, the Qualifying Series will be extended.
- 11.4. The Qualifying Series points less discard are carried forward to the Final Series.

12. [NP][DP] SUPPORT VESSELS

- 12.1. Support vessels shall be registered with the Organising Authority and will be required to comply with local legislation and the **29er Class Support Vessel Regulations**. Please see **Attachment B**.
- 12.2. Coaches and Companions/Parents boats are required to register through the event website www.29erworlds.org on OurClubAdmin and pay the appropriate fee as per NoR 4.3.
- 12.3. All support vessels shall clearly display their national letters at all times while afloat. The minimum height of the letters shall be 200mm and visible from both sides of the boat.
- 12.4. If called upon support vessels will be required to act as rescue boats.
- 12.5. Support vessels must register at the venue and will be provided with a berth and an ID.
- 12.6. Crane service is included for all officially registered support vessels.
- 12.7. All support and coach boats/ribs should be equipped with a VHF marine radio.

13. SAFETY

In the event of an emergency on the water, the meeting point for safety personnel and the dropping off point for safety boats coming from the racing area will be next to South ramp. The Sailing Instructions will provide all details about the location, procedure and health services. The venue will be equipped with medical personnel.

14. INTERNATIONAL JURY

An International Jury will be appointed in accordance with RRS 91(b). Its decisions will be final as provided in RRS 70.5.

15. PRIZES

15.1. Prizes will be awarded in the following categories:

- a. Men's World Champions 1st to 3rd
- b. Women's World Champions 1st to 3rd.
- c. Overall 1st to 10th.
- d. Under 17 World Champions 1st to 3rd male and 1st to 3rd female (must be born in 2006 or later).
- e. Silver, Bronze, Emerald, Fuchsia and Pearl Fleets 1st to 3rd.
- f. Top 25 Sail Numbers: the top 25 teams shall be awarded the corresponding sail number and recognised at the prize giving ceremony. Sail numbers shall be provided by Ovington Boats.
- g. The Nations Cup shall be awarded to the nation with the best performance at the World Championships.

15.2. Other prizes may be awarded at the discretion of the Organising Authority.

16. RIGHTS TO USE NAMES & LIKENESSES

16.1. Where consent has been given for imagery, competitors grant to the Organising Authority without payment the right in perpetuity to make, use and show any motion pictures, still pictures and live, taped or filmed television of or relating to the event. A drone may be flown by a licensed company to record video and still imagery primarily for the event advertising and promotion.

16.2. Only drones of the Organising Committee or with the approval of the organiser may be flown on the venue and the racing area.

17. RISK STATEMENT

17.1. RRS 3 of the Racing Rules of Sailing states: "The responsibility for a boat's decision to participate in a race or to continue racing is hers alone."

17.2. Sailing is by its nature an unpredictable sport and therefore inherently involves an element of risk. By taking part in the event, each competitor and their responsible adult agrees and acknowledges that:

- a) They are aware of the inherent element of risk involved in the sport and accept responsibility for the exposure of themselves, their crew and their boat to such inherent risk whilst taking part in the event.
- b) They are responsible for the safety of themselves, their crew, their boat and their property whether afloat or ashore.
- c) They accept responsibility for any injury, damage or loss to the extent caused by their own actions or omissions.
- d) Their boat is in good order, equipped to sail in the event and they are fit to participate.
- e) The provision of a race management team, patrol boats and other officials and volunteers by the event organiser does not relieve them of their own responsibilities.
- f) The provision of patrol boat cover is limited to such assistance, particularly in extreme weather conditions, as can be practically provided in the circumstances.
- g) It is their responsibility to familiarise themselves with any risks specific to this venue or this event drawn to their attention in any rules and information produced for the event and to attend any competitor briefing held for this event.

18. INSURANCE

Each participating boat shall be insured with valid third-party liability insurance with a minimum cover of 1.5 million € per event or the equivalent.

19. FURTHER INFORMATION

For information on travel and accommodation, including lists of local hotels, holiday rentals, B&B's, campervans, caravans and camping please check the event website www.29erworlds.org

LOA local offices: sailing@cnelbalis.com – (+34)937929900 – www.cnelbalis.com

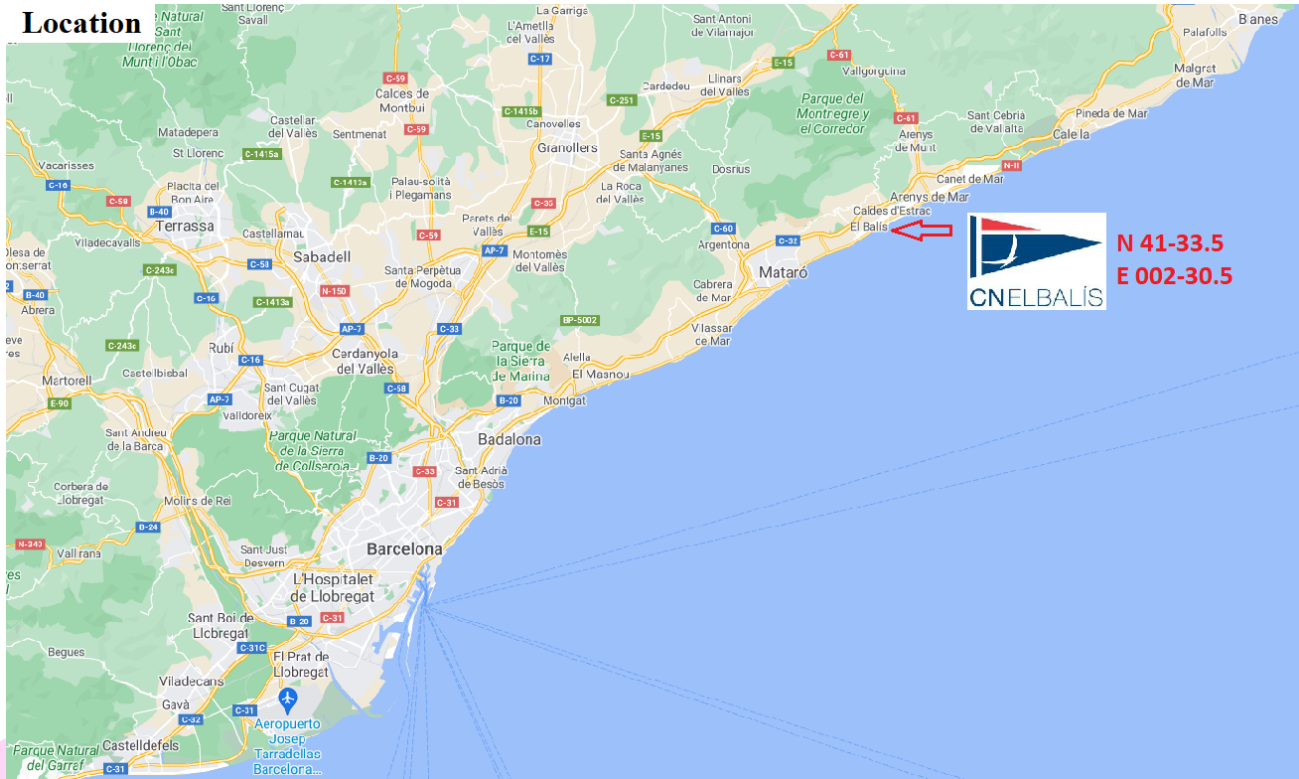
20. CHARTER BOATS and RIBs

For official charter boats and RIBs information please see the link below

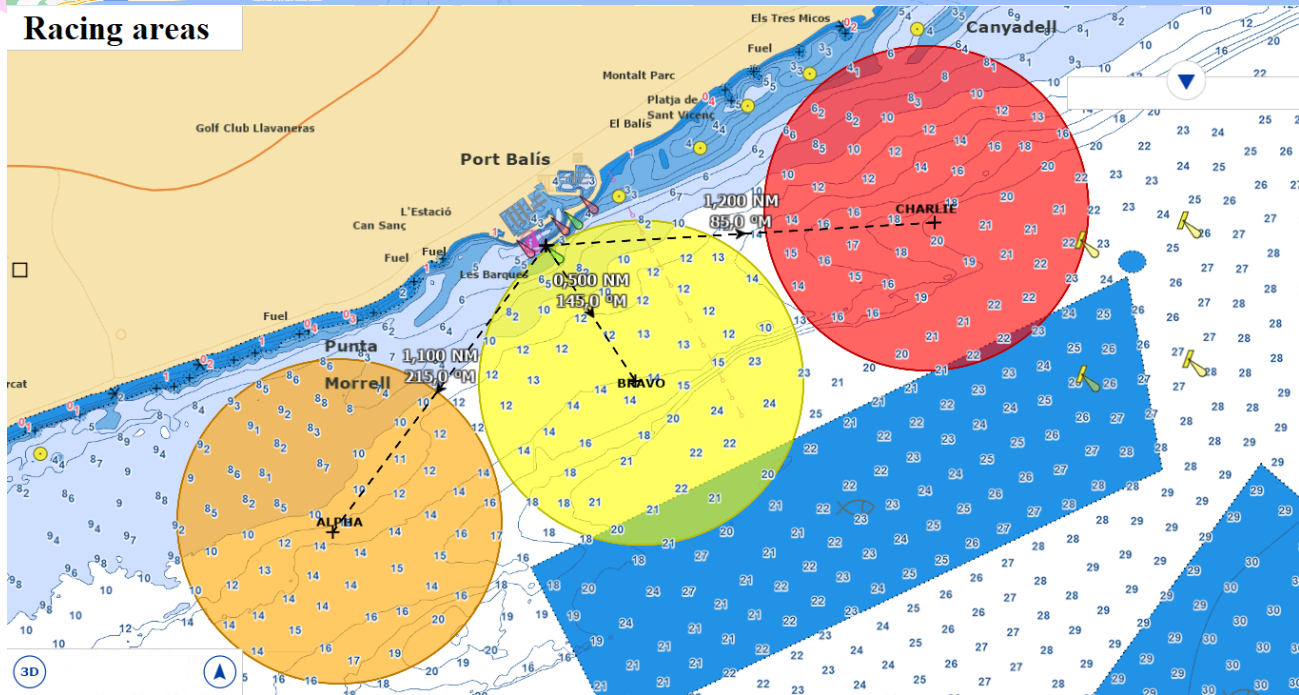
<https://29erworlds.org/event-logistics/>

Attachment A

Location



Racing areas



Attachment B

29er SUPPORT VESSEL REGULATIONS

- Support Vessels shall carry the following Equipment on board:
 - Life jackets / buoyance aids for the driver and all passengers
 - Engine kill cord (also known as a safety lanyard or automatic engine immobiliser) with a spare kill cord on the support boat
 - VHF radio capable of receiving instruction from Safety or Race Committee
 - First-aid kit
 - Device for making a sound signal
 - Compass
 - Adequate anchor and tackle for conditions and depth
 - Tow rope (minimum 15m long and 10mm thick)
 - Knife

- Support Vessel Regulations
 - Support Vessels shall be registered with the Organising Authority and shall be marked with their applicable national sail letters clearly displayed, the minimum height for these letters is 200mm.
 - Support Vessels shall comply with all local regulations
 - Support Vessel shall follow Race Committee instructions on the designated VHF channel
 - **Kill cords shall be worn at all times when the engine is running**
 - Life jackets / buoyance aids - it is recommended that they are worn at all times when afloat and **shall** be worn in winds of over 10 knots or when motoring at more than 10 knots
 - Support vessels shall not be positioned, except during rescue operations
 - ✓ Closer than 100 metres of any boat racing
 - ✓ Within 100 metres to leeward of the starting line and its extensions from two minutes after the orange flag attention signal until all boats have left the starting area for each race
 - ✓ Within 100 metres of any mark of the course while boats are in the vicinity of that mark
 - ✓ Within 100 metres of the finishing line while boats are finishing
 - ✓ In addition, support vessels that are motoring above 5 knots shall remain at least 150 metres from any boat racing

David Campbell-James
Email: campbelljames@btinternet.com
January 2022