



29er World Championships

Aarhus, Denmark

1st - 9th August 2024

The Organising Authority is Sailing Aarhus in conjunction with the
International 29er Class Association

SAILING INSTRUCTIONS

[NP] denotes a rule that shall not be grounds for protests by a boat. This changes RRS 60.1(a).

[DP] denotes a rule for which the penalty is at the discretion of the International Jury.

[SP] denotes a rule for which a standard penalty may be applied by the race committee without a hearing or a discretionary penalty applied by the International Jury with a hearing. This changes rule A5.1

1. RULES

- 1.1 The regatta will be governed by the rules as defined in *The Racing Rules of Sailing*.
- 1.2 Penalties: In RRS 44.1 "Two-Turns Penalty" is changed to "One-Turn Penalty".
- 1.3 Appendix P, *Special Procedures for Rule 42*, shall apply, with RRS P2.1 to P2.3

MUSTO

deleted and replaced by:

P2.1 First and Second Penalty

When a boat is penalized under rule P1.2 for the first or second time during the event, her penalty shall be a One-Turn Penalty under rule 44.2. If she fails to take the penalty she shall be disqualified without a hearing.

P2.2 Third and Subsequent Penalties

When a boat is penalized a third or subsequent time during the event, she shall promptly retire. If she fails to do so she shall be disqualified without a hearing and her score shall not be excluded.

- 1.4 The Class Rules will apply except for any that are altered by the Notice of Race. The Class Race Management Guidelines will also apply, but a failure to follow these Guidelines is not on its own grounds for redress. This changes RRS 62.1(a).

https://29er.org/images/29er_Race_Management/29er_Race_Management_Guidelines-201904.pdf.

- 1.5 No National prescriptions shall apply.

- 1.6 Appendix T shall apply.

2. ADDITIONAL IDENTIFICATION [NP][SP]

While racing each boat shall display a coloured placard corresponding to the fleet to which she has been assigned and inserted in the sail pocket near the clew of the mainsail. Placards will be available from the race office each day from 2 hours before the first race of the day and returned after sailing each day within the Protest Time Limit of the day.

3. NOTICES TO COMPETITORS

Notices to competitors will be posted on the official notice board;

<https://int29erclass.ourclubadmin.com/notice-board.php?event=313> Notices to competitors will also be posted on the Event website at www.29erworlds.org

4. CHANGES TO SAILING INSTRUCTIONS

Any change to the sailing instructions will be posted not less than 30 minutes before flag D is displayed (SI 5.2), except that any change to the schedule of races will be posted by 20:00 hours on the day before it will take effect. Up to FOUR races a day may be sailed for each fleet without the need for a change in Sailing Instructions

5. SIGNALS MADE ASHORE

- 5.1 Signals made ashore will be displayed on the flag poles on the balcony of the Sailing Centre.

- 5.2 **[DP][NP][SP]** Flag D and a fleet flag with one sound means: “The warning signal for that fleet will be made not less than 60 minutes after flag D is displayed”. Boats shall not leave their allocated berth until their fleet signal has been made.

6. FORMAT OF RACING

- 6.1 The regatta will consist of a Qualifying Series with a maximum of 9 races and a Final Series with a maximum of 9 races. The provisional racing schedule is described in Attachment C. Two fleets will race on each racecourse with the second fleet starting not less than five minutes after the first fleet.

6.2 Qualifying Series:

- (a) For the Qualifying Series boats will be assigned to fleets Yellow, Blue, Red, Green, Purple and White, of as nearly as possible, equal size and ability. Initial fleet

assignments will be made by a seeding committee appointed by the Class and posted by 09:00 on the first day of racing.

- (b) In the Qualifying Series boats will be reassigned to fleets after each day of racing. However, the first reassignment will not be made until all fleets have completed two races. If all fleets have completed the same number of races, boats will be reassigned based on their ranks in the series. If all fleets have not completed the same number of races the series scores for reassignment will be calculated for those races, numbered in order of completion, completed by all fleets. Reassignments will be made as follows;

| Rank in series | Fleet assignment |
|-----------------------|-------------------------|
| First | Yellow |
| Second | Blue |
| Third | Red |
| Fourth | Green |
| Fifth | Purple |
| Sixth | White |
| Seventh | White |
| Eighth | Purple |
| Ninth | Green |
| Tenth | Red |
| Eleventh | Blue |
| Twelfth | Yellow |
| and so on | |

6.3 Final Series:

- (a) Boats will be assigned to the Final Series fleets Gold, Silver, Bronze, Emerald, Purple and White based on their ranks in the Qualifying Series. The **45** boats ranked highest in the Qualifying Series will be assigned to the Gold fleet. The remaining boats in the Qualifying Series will be assigned to the Silver, Bronze, Emerald, Purple and White fleets as nearly as possible of equal size.
- (b) Any recalculation of Qualifying Series rankings after boats have been assigned to the Final Series fleets will not affect the assignments except that a redress decision may promote a boat to a higher fleet.
- (c) For the Final Series the top three male competitors, the top three female competitors and the top three mixed competitors in the Gold fleet shall wear leader bibs as directed by the organisers. These bibs will be supplied by the organisers.

7. SCHEDULE

7.1 The Championship schedule will be as follows:

| | | |
|---------------------|-----------------------------|-------------|
| Thursday 1st August | Race Office open | 0900 |
| | Registration and Inspection | 0900 - 1800 |
| Friday 2nd August | Registration and Inspection | 0900 - 1800 |
| Saturday 3rd August | Registration and Inspection | 0900 - 1800 |
| | Practice race | 1400 |
| | Competitors briefing | 1815 |
| | Opening Ceremony | 1900 |

| | | |
|----------------------|---------------------------------|------|
| Sunday 4th August | Qualifying races | 1100 |
| Monday 5th August | Qualifying races | 1100 |
| Tuesday 6th August | Qualifying races | 1100 |
| | Regatta Dinner | 1800 |
| Wednesday 7th August | Final series races | 1100 |
| Thursday 8th August | Final series races | 1100 |
| Friday 9th August | Final series races | 1000 |
| | Prize Giving & Closing Ceremony | TBC |

7.2 On Friday 9th August there will be no warning signal after 1500.

7.3 Each race day, a daily briefing will be held in the Event Hall at 0900.

8. CLASS FLAGS

Class flags will be the class insignia on a coloured flag are as follows:

| Qualifying fleets | Final fleets | Flag colour |
|-------------------|--------------|-------------|
| Yellow | Gold | Yellow |
| Blue | Silver | Blue |
| Red | Bronze | Red |
| Green | Emerald | Green |
| Purple | Purple | Purple |
| White | White | White |

9. RACING AREA

Attachment A shows the location of racing areas, courses A, B and C.

10. THE COURSE

10.1 The diagram in Attachment B shows the course, including the course signals, the order in which marks are to be passed, and the side on which each mark is to be left.

10.2 No later than the warning signal the course signals and the approximate compass bearing of the first leg will be displayed on a board on the start line committee boat.

10.3 A gate may be replaced by a single mark to be left to port.

10.4 Races will not be shortened. This changes RRS 32.

11. MARKS

11.1 Course A

Marks 1, 2S and 2PYellow conical

Spreader mark 1a.....Yellow ball

Change markGreen cylindrical

Course B

Marks 1, 2S and 2PRed conical

Spreader mark 1a.....Yellow ball

Change mark.....Green cylindrical

Course C

Marks 1, 2S and 2POrange conical

Spreader mark 1a.....Yellow ball

Change mark..... Green cylindrical

11.2 Starting marks will be race committee vessels.

11.3 Finishing marks will be a race committee vessel displaying a Blue flag and the nearby Checkered cylindrical finishing mark.

12. THE START

12.1 The starting line will be between staffs displaying orange flags on the race committee vessels.

12.2 [DP][NP] Boats whose warning signal has not been made shall be at least 100 metres to leeward of the starting line and its extensions during the starting sequence for other races.

12.3 A boat starting later than 4 minutes after her starting signal will be scored Did Not Start without a hearing. This changes RRS A5.1 and A5.2.

12.4 To alert boats that a race or sequence of races will begin soon, the orange starting line flag will be displayed with ONE sound signal not less than TWO minutes before the warning signal is displayed.

13. CHANGE OF THE NEXT LEG OF THE COURSE

13.1 To change the next leg of the course, the race committee will lay a new mark and remove the original mark as soon as practicable. When in a subsequent change a new mark is replaced, it will be replaced by an original mark.

13.2 If the windward mark is changed a new spreader mark will not be laid.

14. THE FINISH

The finishing line will be between the staff displaying a blue flag on the race committee vessel and the Checkered cylindrical finishing mark.

15. TIME LIMITS AND TARGET TIMES

15.1 Time limits and target times are as follows:

| Time limit | Target time |
|------------|-------------|
| 45 minutes | 30 minutes |

15.2 If no boat sails the course and finishes within the time limit the race will be abandoned. Failure to meet the target time will not be grounds for redress. This changes RRS 62.1(a).

15.3 Boats failing to finish within 15 minutes after the first boat sails the course and finishes will be scored Did Not Finish without a hearing. This changes RRS 35, A5.1 and A5.2.

16. PROTESTS AND REQUESTS FOR REDRESS

16.1 Protests, requests for redress or reopening, scoring enquiries, equipment changes, crew changes and general enquiries shall be made within the appropriate time limit (where appropriate) using the link,

<https://int29erclass.ourclubadmin.com/notice-board.php?event=313>

16.2 The protest time limit for each course area is 60 minutes after the last boat has finished the last race of the day on that day, or the race committee signals no more racing today, whichever is later. However, the protest time limit is 30 minutes after the signal AP over A is displayed ashore.

16.3 Notices will be posted no later than 30 minutes after the protest time limit to inform competitors of arbitration meetings and hearings in which they are parties or named as witnesses. These meetings and hearings will be held in the protest room, next to the

Race Office.

16.4 A list of boats that under SI 1.3, have been penalized for breaking RRS 42 will be posted.

16.5 Decisions of the jury will be final as provided in RRS 70.5.

16.6 In RRS 62.2(a) and 66.2(a) change ‘the last scheduled day of racing’ to ‘the last day of the Qualifying Series or the last scheduled day of racing’.

17. ARBITRATION

Appendix T shall apply.

18. SCORING

18.1 THREE Qualifying Series races are required to be completed by all fleets to constitute a regatta

18.2 Qualifying Series

18.2.1 FIVE races are required to be completed by each fleet to constitute a Qualifying Series. If these FIVE races are not completed by the end of Day 3, or Day 4 or Day 5 all races on the following day will be Qualifying Series races.

18.2.2 If at the end of the Qualifying Series some boats have more race scores than others, scores for those boats’ most recent races will be excluded so that all boats have the same number of race scores.

18.2.3 For the Qualifying Series, RRS A5.2 is changed so that the scores are based on the number of boats assigned to the largest fleet.

18.3 Final Series

18.3.1 Each Final Series fleet will be scored separately. Final Series fleets need not have completed the same number of races. The boats in the Gold fleet will be ranked highest, followed by boats in Silver, Bronze, Emerald, Purple and White.

18.3.2 A boat’s regatta score will be the total of her Qualifying Series score, plus her Final Series score.

18.4 **Series Scores** (applies separately to Qualifying and Final Series):

18.4.1 When fewer than THREE races have been completed, a boat’s series score will be the total of her race scores.

18.4.2. When THREE or more races have been completed a boat’s series score will be the total of her race scores excluding her worst score.

18.5 Scoring Queries

18.5.1 To request correction of an alleged error in posted race or series results, a boat shall complete a scoring enquiry form available on the website.

18.6 Resolving Ties

18.6.1 In the Qualifying Series ties will be broken in accordance with RRS A8.

18.6.2 In the Final Series ties will be broken in accordance with RRS A8 using boats’ Final Series race scores.

19. SAFETY REGULATIONS [DP][NP][SP]

19.1 A safety tally system will be in operation.

19.1.1 The tally control point will be next to the main launching ramp.

19.1.2 Tallies comprising NFC-chip wristbands will be allocated at registration for ALL sailors. Tallies shall be worn by sailors at all times while afloat.

19.1.3 All Competitors shall individually tally-out before racing by personally going to the

- tally control point and tallying out.
- 19.1.4 Competitors shall individually tally-in within 10 minutes of returning to shore by personally going to the tally control point and tallying-in.
- 19.1.5 The penalty for failing to tally-out or tally-in as instructed above will be THREE points added to the boat's series score, non-excludable for each offence. This changes RRS 63.1 and A5.
- 19.2 Boats not leaving the shore for the day's races shall notify the race office as soon as possible.
- 19.3 A boat that retires from a race shall notify the race committee as soon as possible.
- 19.4 RRS 40.1 applies at all times whilst afloat.
- 19.5 Under all circumstances coaches and other support boats are expected to assist any boat in distress.

20. REPLACEMENT OF CREW AND EQUIPMENT [DP]

- 20.1 Substitution of competitors will not be allowed without prior written approval of the race committee.
- 20.2 [NP] Substitution of damaged or lost equipment will not be allowed unless approved by the Technical Committee. Requests for substitution shall be made to the committee at the first reasonable opportunity.

21. EQUIPMENT & MEASUREMENT CHECKS [DP]

- 21.1 [NP] On the water, a boat shall comply with any instruction from the race committee, equipment inspector or measurer to proceed immediately to a designated area for inspection.
- 21.2 Only one set of sails and one forestay shall be used during the regatta. They shall be presented and stamped/tagged during the measurement procedure.

22. OFFICIAL VESSELS

Official vessels will be identified as follows:

| | |
|---------------------------------------|---------------------------------|
| Race committee vessel - Course A..... | White flags with letter Alpha |
| Race committee vessel - Course B..... | White flags with letter Bravo |
| Race committee vessel - Course C..... | White flags with letter Charlie |
| Jury vessels..... | Yellow flags with JURY |
| Press vessels..... | White flags with MEDIA |
| Measurer..... | White flag with MEASURER |

23. SUPPORT VESSELS [DP][NP]

- 23.1 Support vessels including parent and spectator boats shall be registered with the Organising Authority and shall comply with local legislation and the 29er Class Support Vessel Regulations (see Attachment E)
- 23.2 Support vessels shall stay outside areas where boats are racing from the time of the preparatory signal until all boats have finished or retired or the race committee signals a postponement, general recall or abandonment.
- 23.3 Support vessels shall be marked with their national letters on outboard covers or a flag. Minimum height for letters is 200mm.
- 23.4 If called upon support vessels shall be required to act as rescue boats.

24. CODE OF CONDUCT [DP][NP]

Competitors and Support persons shall comply with any reasonable request from a regatta official or a member of the Organising Authority. Boats shall follow all instructions

given by the OA when returning to shore to avoid overcrowding at the launching ramps.

25. TRASH DISPOSAL

Trash may be placed aboard support and race committee boats.

26. BERTHING [DP][NP]

Boats shall be kept in their assigned places in the boat park.

27. RADIO COMMUNICATION [DP][NP]

Except in an emergency, a boat shall neither make radio transmissions while racing nor receive radio communications not available to all boats. This restriction includes mobile telephones.

28. ELECTRONIC EQUIPMENT [DP][NP]

A boat or support team shall not use a drone over the racing area. However, a drone may be flown by a licensed company authorised by the Organising Authority to record video and still imagery exclusively for advertising and promotion.

29. PRIZES

29.1 Prizes for the 29er World Championships will be awarded in the following categories,

- a. Men's World Champions 1st to 3rd.
- b. Women's World Champions 1st to 3rd.
- c. Mixed World Champions 1st to 3rd.
- d. Overall 1st to 10th.
- e. Under 17 Champions 1st to 3rd male, 1st to 3rd female and 1st to 3rd mixed (must be born in 2008 or later).
- f. Silver, Bronze, Emerald, Purple and White Fleets 1st to 3rd.
- g. Nations Cup shall be awarded to the top nation based on the scoring in Attachment D.

29.2 Top 25 Sail Numbers: the top 25 teams shall be awarded the corresponding sail number and recognized at the prize giving ceremony. Sail numbers shall be provided by Ovington Boats.

29.3 Other prizes may be awarded at the discretion of the Organising Authority.

30. RIGHTS TO USE NAMES AND LIKENESSES

Where consent has been given for imagery, competitors grant to the Organising Authority without payment the right in perpetuity to make, use and show any motion pictures, still pictures and live, taped or filmed television of or relating to the event.

31. RISK STATEMENT

RRS 3 of the Racing Rules of Sailing states: "The responsibility for a boat's decision to participate in a race or to continue racing is hers alone."

Sailing is by its nature an unpredictable sport and therefore inherently involves an element of risk. By taking part in the event, each competitor agrees and acknowledges that:

- a) They are aware of the inherent element of risk involved in the sport and accept responsibility for the exposure of themselves, their crew and their boat to such inherent risk whilst taking part in the event;

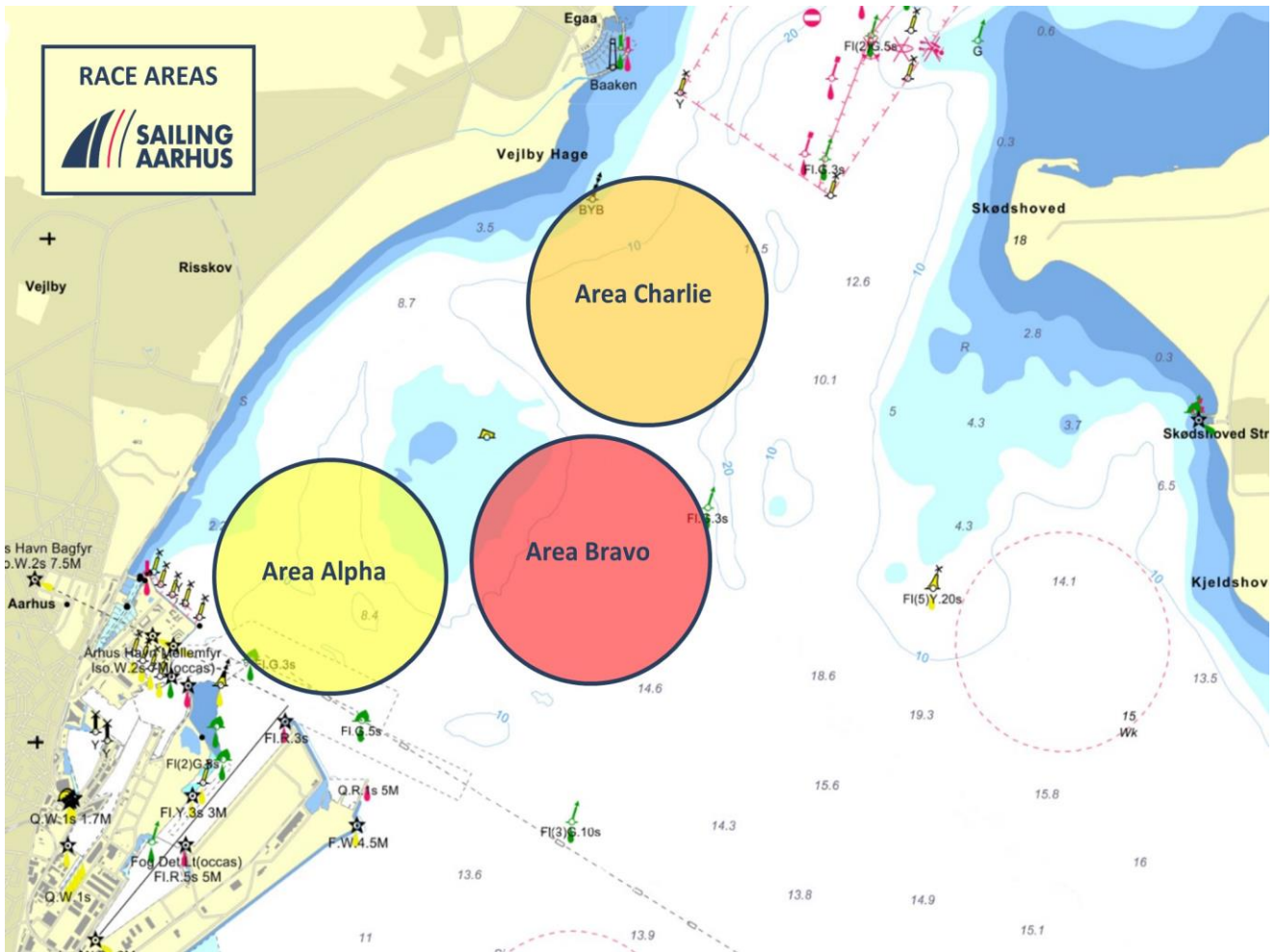
- b) They are responsible for the safety of themselves, their crew, their boat and their property whether afloat or ashore;
- c) They accept responsibility for any injury, damage or loss to the extent caused by their own actions or omissions;
- d) Their boat is in good order, equipped to sail in the event and they are fit to participate;
- e) The provision of a race management team, patrol boats and other officials and volunteers by the event organiser does not relieve them of their own responsibilities;
- f) The provision of patrol boat cover is limited to such assistance, particularly in extreme weather conditions, as can be practically provided in the circumstances
- g) It is their responsibility to familiarise themselves with any risks specific to this venue or this event drawn to their attention in any rules and information produced for the event and to attend any competitor briefing held for this event.

33. INSURANCE

Each participating boat shall be insured with valid third-part insurance with a minimum cover of Euros 1.5 million per event or the equivalent.

Attachment A

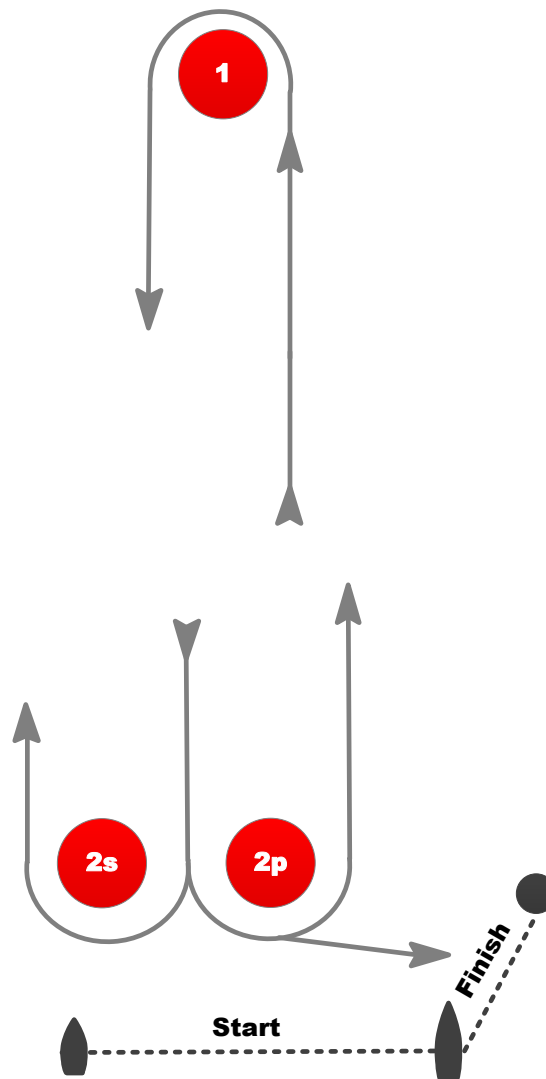
Racing Areas



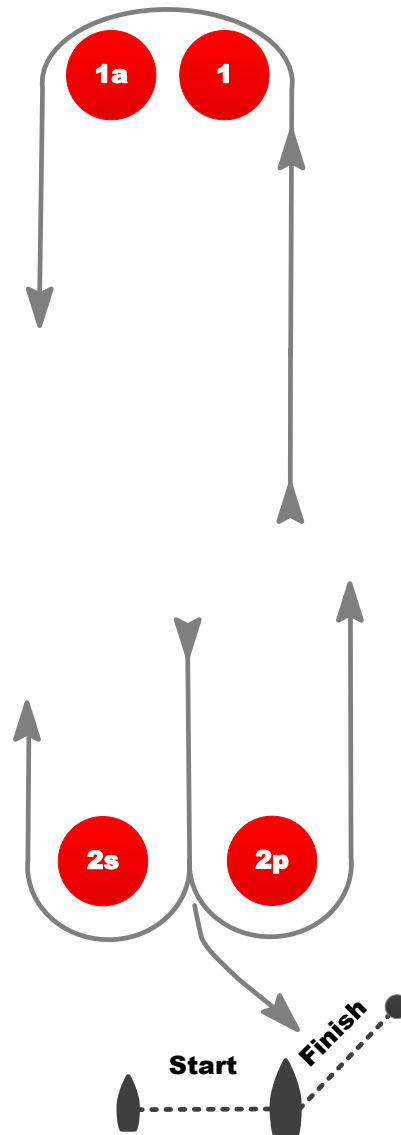
Attachment B

THE COURSE

| L | COURSE: WINDWARD / LEEWARD with reaching finish |
|---------------|--|
| Signal | Mark Rounding Order |
| L2 | Start – 1 – 2s/2p – 1 – 2p – Finish |
| L3 | Start – 1 – 2s/2p – 1 – 2s/2p – 1 – 2p – Finish |



| LA | COURSE: WINDWARD / LEEWARD with spreader mark and reaching finish |
|---------------|--|
| Signal | Mark Rounding Order |
| LA2 | Start – 1 – 1a – 2s/2p – 1 – 1a – 2p – Finish |
| LA3 | Start – 1 – 1a – 2s/2p – 1 – 1a – 2s/2p – 1 – 1a – 2p – Finish |



Attachment C **Provisional** Racing Schedule

The Daily Schedule will be confirmed each evening for the following day.

| World Championships 3 August to 9 August 2024 | | | |
|--|----------------------|---------------------|---------------------|
| Warning signal | | | |
| Practice Day – 3 August | Course A | Course B | Course C |
| 13:55 | 29er Yellow | 29er Red | 29er Purple |
| ASAP | 29er Blue | 29er Green | 29er White |
| Day 1 - 4 August Qualifying | Course A | Course B | Course B |
| 10.55 | 29er Yellow 3 races | 29er Red 3 races | 29er Purple 3 races |
| ASAP | 29er Blue 3 races | 29er Green 3 races | 29er White 3 races |
| Day 2 - 5 August Qualifying | Course A | Course B | Course C |
| 10.55 | 29er Yellow 3 races | 29er Red 3 races | 29er Purple 3 races |
| ASAP | 29er Blue 3 races | 29er Green 3 races | 29er White 3 races |
| Day 3 - 6 August Qualifying | Course A | Course B | Course C |
| 10.55 | 29er Yellow 3 races | 29er Red 3 races | 29er Purple 3 races |
| ASAP | 29er Blue 3 races | 29er Green 3 races | 29er White 3 races |
| Day 4 - 7 August Final | Course A | Course B | Course C |
| 10.55 | 29er Gold 3 races | 29er Silver 3 races | 29er Bronze 3 races |
| ASAP | 29er Emerald 3 races | 29er Purple 3 races | 29er White 3 races |
| Day 5 - 8 August Final | Course A | Course B | Course C |
| 10.55 | 29er Gold 3 races | 29er Silver 3 races | 29er Bronze 3 races |
| ASAP | 29er Emerald 3 races | 29er Purple 3 races | 29er White 3 races |
| Day 6 - 9 August Final | Course A | Course B | Course C |
| 09.55 | 29er Gold 3 races | 29er Silver 3 races | 29er Bronze 3 races |
| ASAP | 29er Emerald 3 races | 29er Purple 3 races | 29er White 3 races |

Attachment D

2024 29er WORLD CHAMPIONSHIP

OVINGTON NATIONS CUP

The Ovington Nations Cup shall be awarded to the nation with the best THREE- boat aggregate points score at the 2024 29er World Championship, calculated as follows:

1. A nation's three boats shall include boats from at least two of the three prize categories (Men's, Women's and Mixed). If a Final Series is sailed, the three boats shall have sailed in the Gold or Silver fleets.
2. At the conclusion of the Championships, each nation's three boats' points scores will be added together. The nation with the lowest total score shall win the Nations Cup, and other nations shall be ranked accordingly.
3. However, to enable boats from the Silver Fleet to take part and be appropriately scored, the points score of any boat from the Silver Fleet shall be increased by N where $N = (\text{Points Scored by Last Boat in Gold Fleet}) - (\text{Points Scored by First Boat in Silver}) + 1$. *This allocates a Nations Cup score to all boats in Silver Fleet based on scoring the first boat in Silver one point more than the last boat in Gold.*
4. Ties shall be broken in favour of the nation whose three boats secured more first place finishes in the Gold Fleet Final Series (or Single Series if no Final Series is sailed). If this fails to break a tie, it shall be broken in favour of the three boats with more second place finishes in those races, then third place finishes, and so on until the tie is broken.

Attachment E

SUPPORT VESSEL REGULATIONS *29er*

Support Vessels shall carry the following Equipment on board,

- Life jackets / buoyance aids for the driver and all passengers,
- Engine kill cord (also known as a safety lanyard or automatic engine immobiliser) with a spare kill cord on the support boat
- VHF radio capable of receiving instruction from Safety or Race Committee
- First-aid kit
- Device for making a sound signal
- Compass
- Adequate anchor and tackle for conditions and depth
- Tow rope (minimum 15m long and 10mm thick)
- Knife

Support Vessel Regulations

- Support Vessels shall be registered with the Organising Authority and shall be marked with their applicable national sail letters clearly displayed, the minimum height for these letters is 200mm.
- Support Vessels shall comply with all local regulations.
- Support Vessels shall follow Race Committee instructions on the designated VHF channel
- **Kill cords shall be worn at all times when the engine is running**
- Life jackets / buoyance aids - it is recommended that they are worn at all times when afloat and **shall** be worn in winds of over 10 knots or when motoring at more than 10 knots
- Support vessels shall not be positioned, except during rescue operations.
 - Closer than 100 metres of any boat racing
 - Within 100 metres of the starting line and its extensions from the warning signal until all boats have left the starting area.
 - Within 100 metres of any mark of the course while boats are in the vicinity of that mark
 - Within 100 metres of the finishing line while boats are finishing
 - In addition, support vessels that are motoring above 5 knots shall remain at least 150 metres from any boat racing.